

GN 558 Crank handles

with positioning and rest pin, cast iron

METRIC



- 1
- 2
- 3
- 4
- 5
- 6
- 7
- 8
- 9
- 10
- 11
- 12
- 13
- 14
- 15
- 16
- 17
- 18

MATERIAL

Cast iron, sandblasted matte finish.

CYLINDRICAL HANDLE

Black-oxide steel.

POSITIONING AND REST PIN

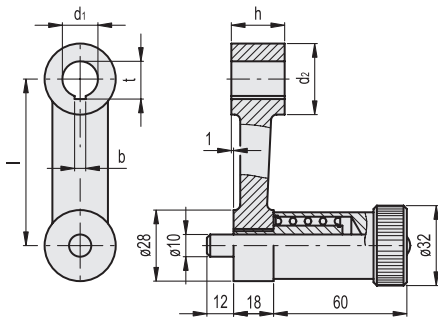
Hardened steel.

STANDARD EXECUTIONS

- GN 558-B: hub with H7 reamed hole.
- GN 558-K: hub with H7 reamed hole and keyway in compliance with DIN 6885/2 tolerance P9 (see page A-15).

FEATURES AND APPLICATIONS

GN 558 control levers are normally used for positioning shafts in pre-fixed positions. The levers can also be supplied not assembled.



METRIC

Code	Description	l	d1 H7	d2	h	bP9	t	⚖️
GN.23101	GN 558-75-B16	75	16	32	24	-	-	544
GN.23102	GN 558-75-K16	75	16	32	24	5	17.3	537
GN.23111	GN 558-90-B18	90	18	34	26	-	-	588
GN.23112	GN 558-90-K18	90	18	34	26	6	19.7	583
GN.23121	GN 558-110-B20	110	20	36	30	-	-	694
GN.23122	GN 558-110-K20	110	20	36	30	6	21.7	689
GN.23131	GN 558-135-B22	135	22	42	32	-	-	823
GN.23132	GN 558-135-K22	135	22	42	32	6	23.7	818
GN.23141	GN 558-165-B24	165	24	44	36	-	-	994
GN.23142	GN 558-165-K24	165	24	44	36	8	25.7	988

METP. Balanced crank handle

Technopolymer

METRIC



MATERIAL

Glass-fibre reinforced polyamide based (PA) technopolymer, black colour, matte finish. Balancing by means of an incorporated counterweight.

CENTRE CLOSING CAP

Technopolymer, black colour. On request and for sufficient quantities it can be supplied in other colours and customised with marks or words.

STANDARD EXECUTION

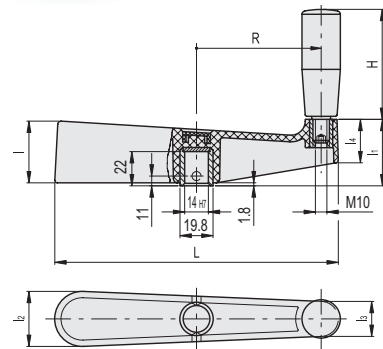
Black-oxide steel boss, H7 reamed hole. Reamed hole provided with centres already drilled for pinning to shaft. Revolving handle I.601+x (see page 664) in technopolymer.

FEATURES

Its surface with matte finish allows a sensible grip during operation, even in case of short approach controls. The revolving handle makes high-speed rotation easier.



ELESA Original design



METRIC

Code	Description	dH7	L	l	l1	l2	l3	l4	H	R	⚖️
38901	METP.170	14	170	37	39	33	21	25	65	74	275

Conversion Table
1 mm = 0.039 inch

mm	inch
75	2.95
90	3.54
110	4.33
135	5.31
165	6.50

Conversion Table
1 mm = 0.039 inch

mm	inch
170	6.69

Operating elements